

Fragile Earth



WHAT'S IN THIS ISSUE?

Cairo Conference, *pg. 1*

“The Duality of American Thinking”
by Buck Lindsay, *pg. 1*

Rotary Celebrates
100 Years, *pg. 1*

Chairman's Report, *pg. 2*

Fast Facts, *pg. 2*

“Climbing out of Poverty”
by Rekha Shetty, *pg. 3*

Saheli Centre, *pg. 4*

RFPD's New
Executive Director, *pg. 5*

COL 04-227, *pg. 5*

Kid's Corner, *pg. 6*

“The Silent Revolution of Hope” by Dr. Robert Zinser, *pg. 6*

New Lifetime
Members, *pg. 7*

Join RFPD!, *pg. 8*

RFPD Officers and
Country Chairs, *pg. 8*

RFPD Projects List,
insert

Fragile Earth

September 2004

Published by The Rotarian Fellowship for Population & Development

CAIRO TO HOST CONFERENCE ON SUSTAINABLE DEVELOPMENT

Dear Friends and Fellow Rotarians,

I am pleased to take this opportunity to invite each and every one of you to beautiful Cairo, Egypt, for a conference on Sustainable Development : “Rotary’s Road to World Peace.” This conference will be held under the Patronage of H.E. Mrs. Suzanne Mubarak, First Lady of Egypt, December 3-5, 2004. The conference is organized jointly by the Rotary International World Community Service Committee 2004-05 and The Rotarian Fellowship for Population and Development.

This important Rotary gathering in Africa provides an opportunity for all Rotarians to renew old ties, make new friends, exchange ideas and share experiences in an atmosphere of fellowship and goodwill. The conference offers a wide and informative program on all topics of sustainable development to help the needy with high-profile guest speakers.

(continued on page 5)

THE DUALITY OF AMERICAN THINKING

BY BUCK LINDSAY

I am challenged explaining American foreign policy to my international friends. This is not a political statement. It has to do with how we carry out our global leadership role. On one hand, America is the world leader in the defense of freedom against tyranny. We defend freedom around the world. At the same time, we give low value to the issue of carbon emissions, which is the common denominator of global environmental leadership. In a bi-partisan decision in 1997, the US Congress declined to ratify the Kyoto Treaty, wherein other countries of the world agreed to reduce carbon emissions to 1990 levels by 2000, and further by 2010. The reason for America’s decision to not ratify was that we wanted to protect our economy. To have agreed to the Kyoto accords would have hurt American industry and employment, and it would have involved difficult reductions in energy consumption by all Americans across the board. It’s hard to convincingly sell that we’re the good guys - we assure your freedom, while we pollute your sky.

Carbon emission is roughly the same thing as energy consumption. Here in the US, we are 5% of the global population, we consume 25% of the global energy and emit 25% of the global carbon dioxide. Carbon dioxide is the bi-product of the burning of fossil fuels, which are non-renewable resources.

(continued on page 2)

ROTARY CELEBRATES 100 YEARS

In February 2005, Rotary will celebrate its Centennial. Visit www.rotary.org to read about Rotary’s inception, its past presidents, historic timeline and information on how you can spread the word about Rotary and its Centennial Celebration.

RFPD plans a special celebration in Chicago, join us at the RI Chicago Convention, June 18-22, 2005. For more information and registration visit www.rotary.org.

FROM THE DESK OF CHAIRMAN ZINSER

In Bonn last June, I met Professor Muhammad Yunus, Founder and Managing Director of Grameen Bank, Bangladesh, which provides micro-credits to poor women. Professor Yunus remembers his visit to the 1999 RFPD Annual General meeting at the Rotary Convention in Singapore. At the convention he received the Award for World Understanding and Peace from Rotary International. He was interested to hear about the recent activities of RFPD.



Muhammad Yunus (left), Dr. Robert Zinser (right)

The women administrating micro-credits stress to women who receive micro-credits, that practicing family planning will better enable them to repay the money. At the RI-UNFPA Population Conference in Zurich in 2000, half of the conference dealt with micro-credit. Since then, RFPD initiated and co-funded many micro-credit projects in several developing countries like Egypt and Nepal. Micro-credit and family planning projects complement each other. With our micro-credit projects, we have confirmed that the women using micro-credits at the same time are grateful to be informed about child spacing.

Muhammad Yunus received the “Petersberg Prize” from the Development Gateway Foundation at their June 2004 forum in Bonn. The 100,000 Euro Prize recognizes Grameen’s outstanding achievement in the use of information and communication technologies (ICT) to improve people’s lives. Grameen Bank established a program called “Village Phone,” through which women entrepreneurs can start a business providing wireless payphone service in rural areas of Bangladesh. In doing so, Grameen has created a new class of women entrepreneurs who have raised themselves from poverty. Moreover, it has improved the livelihoods of farmers and others who are provided access to critical market information and lifeline communications previously unavailable in some 28,000 villages of Bangladesh.

The Development Gateway Foundation (www.developmentgateway.org), as an enabler of development, helps to improve people’s life in developing countries by building partnerships and information systems that provide access to knowledge for development. It advances the use of information and communication technologies to developing countries. In this way, the digital gap between developing and developed countries should not widen. At the same time, the numerous projects in developing countries will be coordinated to make them more effective. Their global directory of development projects and activities (AIDA – Accessible Information on Development Activities) contains many population projects in numerous countries.

FAST FACTS:

EARLY MARRIAGE AND CHILDBEARING

(SOURCE: UNFPA)

- Despite a shift toward later marriage in many parts of the world, 82 million girls in developing countries who are now ages 10 to 17 will be married before their 18th birthday.

- In some countries, the majority of girls still marry before their 18th birthday. These include India (50 percent), Nepal (60 percent) and Nigeria (76 percent).

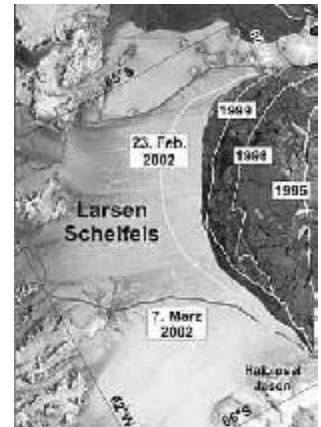
- Worldwide, some 14 million women and girls between ages 15 and 19 (both married and unmarried) give birth each year.

- Pregnancy is a leading cause of death for young women ages 15 to 19 worldwide, with unplanned pregnancies, complications of childbirth and unsafe abortion being the major factors.

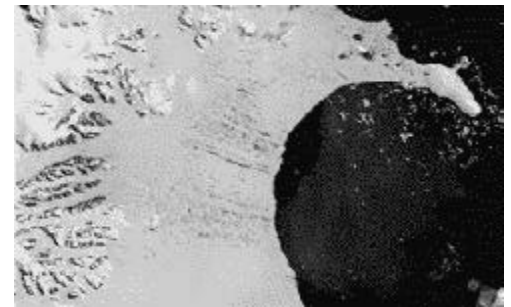
- For both physiological and social reasons, girls ages 15 to 19 are twice as likely to die in childbirth as those in their twenties. Girl’s under age 15 are five times as likely to die as those in their twenties.

(continued from page 1)

Carbon emissions are not kept within national boundaries; they are shared about the global atmosphere. So if we emit more than our share of carbon dioxide, it is a global issue. In 1970, the US peaked as a fossil fuel producer, and began its trend of becoming an energy importer, mainly in the form of oil from countries in the Middle East and Nigeria. Yes, we have fuel reserves and yet to be discovered sources, but America will depend more and more on oil and gas imports in the future. Since we have no plan to reduce our energy consumption, we will continue to grow our emission of carbon dioxide.



Larsen B Ice Shelf 2000



Larsen B Ice Shelf 2004

What’s so bad about emitting carbon dioxide? First answer: global warming. The additional particles of carbon dioxide in the atmosphere create an invisible blanket which allows solar radiation into our atmosphere, but restricts the heat from re-radiating back out, thereby raising our global temperature. From 1981 to 1998, the global temperature rose one degree Fahrenheit. The temperature changes have been more extreme at the polar caps, where warming has been two to three degrees. Everyone hears our polar caps are melting, and raising sea levels. For most people, this is an abstract notion. The same global shift in temperature will cause

(continued on next page)



Antartica - Larsen's Shelf

drought, intensify storms and alter climates around the world. Over 20,000 people dying last year in Europe due to a persistent heat wave, was a global warming relevant event. Nothing good comes to us from more carbon emissions. Sadly, it is our children and grandchildren who will bear the brunt of this miscalculation on our part.

Let's bring this reality into clearer focus. To the left are two pictures of the Larsen B Ice Shelf in Antarctica, the first taken in 2000 and the second taken in 2004. Notice the large area in the 2004 photo that is black, compared to the 2000 photo. This blackness represents the area that was ice in 2000 and is now water. This additional volume of water, and the continuation of the same process for the foreseeable years, virtually assures that low lying areas of the world will be under water in the next 45 years. Islands of the South Pacific will be gone, where inhabitants are now planning to leave. Climatologists predict that by 2050, 25% of all building within 500 feet of the sea today will be gone.

For the US, over 10,000 square miles of coastal land will be lost – the equivalent of the states of Delaware and Massachusetts. By 2050, polar bears will be gone, maple trees in New England will be gone, and 25% of all species of flora and fauna existing today will be gone. This is a steep price to pay for not dealing squarely with a clear and present danger today.

Scientists agree that global warming is real and that its threat to our global environment is serious. Politicians are the only ones left who disagree. Politicians disagree because if they agreed, and moved to do anything about the problem, they might hurt today's economy and jobs, and therefore not be re-elected. This is quite a predicament.

by Buck Lindsay

Poverty is the quicksand that draws families into its slimy depths before they know it. Sometimes all it takes is a single serious illness. The local moneylender with his exorbitant rates of interest often entangles whole families into a spiral of landlessness, poverty and bonded labour. The failure of a single monsoon can push farmers over the brink into the deep well of poverty. Poverty stalks 3.5 billion people on the global stage, waiting for the opportunity to gather them into its arms. Disease, hunger, hopelessness and war are the weapons poverty wields, with terrible consequences. To climb out of poverty is possible through micro-credit. Micro-credit is about those who succeed and those who slide back.

Micro-enterprise is a poverty alleviation technique. With over 20% of the world's population being extremely poor, we need more means of poverty alleviation. Micro-enterprise is not the only means of poverty alleviation, but it may have the most potential for direct and measurable benefits.

The limiting factor in the effectiveness of any micro-enterprise program is usually a lack of credit. In developing countries, nearly 50% of all employment comes from micro and small businesses. Yet only 2% of these businesses have access to credit, other than informal loans involving exorbitant interest rates. The reason for this lack of credit is the traditional thinking - that the poor are high credit risks, cannot pay for the cost of credit, and that they are too poor to save. Fortunately, creative micro-enterprise programs developed over the past ten years have shattered these old paradigms.

It has become evident with these recent programs that the poor are not bad credit risk – often repaying loans at rates better than those found in the US credit card industry. The poor are able to pay the cost of credit, and are willing to save, as a method of extending their credit capacity even further. And, generally, women are a better credit risk, which is why a number of these programs have focused their attention on lending only to women.

In many countries, women's access to credit is limited by cultural, legal and administrative constraints, both overt and covert. Did you know that worldwide, women do 66% of all manual labor, earn 1% of all wages, and own less than 1% of all land. The habit of many patriarchal societies is to perpetuate these statistics, by expecting women only to cook, clean, rear children and care for their husband. In many societies, they are denied education, denied business opportunities and denied the right to pursue gainful occupations.

At the Rotary International Convention in Singapore during 1999 Mohamed Yunus, founder and leader of the Grameen Bank in Bangladesh was awarded Rotary's Award for World Understanding and Peace. In his acceptance speech, Yunus noted that his bank's loans to poor women in Bangladesh had almost perfect repayment history, and that because of the strength of his micro-enterprise focus, his bank had become the largest rural lender in Bangladesh. He observed that these successful loans not only brought more and more people above the poverty line, but they also contributed to the betterment of the communities and the government. They further observed that women who had improved their conditions through these micro-loans were having smaller families, as they broke out of the poverty cycle, and began to contribute in meaningful ways to society. And with the smaller families, they were able to devote more time and resources to making sure that their few children were better cared for and better educated, ensuring that their passing over the poverty line would also be a right to their children.

Other micro-enterprise institutions like Bank Rakyat Indonesia and ACCION International in Latin America have succeeded. Bank Rakyat is fully self sufficient and generates return on investment on par with private banking standards. In 1994, ACCION made \$288 million in loans in 14 Latin American countries.

(continued on page 4)

(continued from page 3)

Average loan size was \$550, with a 98% loan repayment rate, and only 4% of loan repayment installment older than 30 days. Micro-credit programs have helped mothers send their children to school. All those who are part of the program of Grameen Bank make 16 promises. One of the 16 is "we will keep our family small."

Following are a few points to remember:

* Saving is an instinct for most women, so let's encourage this.

* We should service loans by arranging for door-to-door collection.

* We should have a mechanism to reach the poorest of the poor. To dignify the human being: address a woman by her name.

* We should promote micro-credit instead of borrowing from money-lenders.

* Micro-credit for poor women builds the foundation for a happy family.

* Women are the major earners of livelihood of up to half the population of most of the developing countries.

* Economic development can improve the entry point of social action programs for population and development.

Never underestimate poor women, particularly when they are working together as a group. They support, encourage, and help each other. Women use credit to empower themselves. They are not wage-slaves anymore, they are self-employed. Grameen Bank in Bangladesh has empowered 2 million women in 40,000 villages. The bank has given US \$3 billion in loans; they have a 98% repayment rate.

Over 12,000 employees go out and collect installments. Their micro-credit motto is: "the less you have, the more you get." We believe in empowerment of mothers. Mothers are the motors of Grameen Bank; a mother will do anything to save her child.

Today, technology has made it possible for poor women to start successful businesses using telephones and solar energy. Micro-credit can remove the obstacles that keep people poor. Micro-finance needs start-up funding, and Rotary can help.

by PDG. Rekha Shetty

BENEFICIARIES OF SAHELI CENTRE

This Rotary year, a few districts have joined to adopt a special International Service project - to develop eight new Saheli Centers in District 3250, the very poorest part of northern India in the states of Bihar and Jharkhand. Four pilot Saheli Centers were developed last year, and are already open for business. The purpose of the centers is to improve the lot of poor women in the area, by providing literacy training, vocational (sewing and computer) training, primary health and reproductive health. The following news article dated July 10th, Dhanbad, India, shows the success of the first center opened last year in Dhanbad.



By 2025, India will become the most populous country in the world. Poor women are the victims of unsustainably large populations. Literate and vocationally trained women always opt for fewer children, so the success of the Saheli Centers is a critical key to solving the problems that this region of India face.

The Inner Wheel Women's Club of Rotary observed the "World Population Day" on Saturday, July 10, 2004. To mark the occasion, the members of the club distributed birth control packages to women and made them aware of contraception techniques. Members of the club also highlighted the menace of growing population and its adverse impact on the country's economy. The camp was organized at Saheli Center for vocational training and family welfare. A large number of women from Bhuniphore on Govindpur Road took part in the camp.

Birth control measures were explained to the women by gynecologist Dr. Prema Hazra (MBBS, MD and DGO). Government-provided contraceptive pills and condoms were distributed free of cost to the women. Inner Wheel president, Anju Gandotra said that the distribution of birth control packages will become a daily affair at the Center.

The Hindustan Times, Dhandad, July 10

LITERACY EXPRESS INAUGURATION

In June 2004, the Rotary Club of Dhanbad, India inaugurated Project Literacy (P340). Project Literacy educates underprivileged and undernourished women and children. It offers women's literacy awareness, adult training programs, education coordinators for villages, women's education via audio-visual shows, sanitation and cleanliness, aids awareness, polio eradication and more. This project has initiated a mobile educational program through a mini-truck called "The Literacy Express." Project Literacy is sponsored by the Rotary Club of Dhanbad, India and co-sponsored by Rotary Clubs of Jonesboro, Sanford, Siler City and San-Lee, North Carolina, USA, with Matching Grants from District 7690 and The Rotary Foundation.



"The Literacy Express" mini-truck will travel the interior and rural areas of District 3250 in eastern India to help literate its women and children. It is equipped with a video disc player, video cassette player, laptop computer, medical supplies, portable water purifier, standard data projector, projection screen, public address system, pre-amplifier system, and portable generator. This mobile mini-truck will operate 21 days a month with four to five staff members and volunteers (including doctors and technicians). The life of the equipment and mini-truck is expected to be 8-10 years.



For more information on Project Literacy, please contact Kamal or Chandra Sanghvi at kamalsanghvi@yahoo.com or Larry Aiken at larryaiken@charter.net. Visit www.rifpd.org for available projects through RFPD.



NEW EXECUTIVE DIRECTOR

I want to introduce myself and tell you all how honored I am to be a part of Rotary and this important Fellowship. My name is Jennifer Hendrickson, and I am a non-for-profit professional. My background is in marketing for the arts, education and development efforts. I have worked in several different non-profits, including colleges, universities, historical societies and theatre companies. My most recent experience includes managing a musical theatre marketing department with Atlanta Lyric Theatre. I also perform in the productions of this company and love working with children. I believe that my purpose here is to help further the mission of RFPD and to assist people around the world build healthy families. I look forward to my new position with RFPD.

Best regards,
Jennifer Hendrickson

(continued from page 1)

Cairo, as the host city of this conference, has its own character, charm and great history. You will enjoy the conference, but you will take with you wonderful and unforgettable memories of the great and generous hospitality of its people. Don't forget to experience Egypt's 7000 year old history by visiting Luxor, Assuan and Abu Simbel with its pharaonic treasures, besides the Great Pyramids, the Sphinx, the Egyptian Museum, Islamic and Coptic monuments of Cairo itself. Relax at the marvellous beaches of the Red Sea or visit the Monastery of St. Catherine and climb Mount Moses in Sinai. And there's much more to see in our country.

I hope to see all of you in Cairo.

Sincerely,
Salem Mashhour, Vice-Chairman, RFPD

Please visit our website at www.rifpd.org or www.rifpd.de to print a copy of the Registration Form and Flyer.

COUNCIL ON LEGISLATION REFERS PROPOSED ENACTMENT FOR A NEW STANDING COMMITTEE ON POPULATION CONCERNS TO THE BOARD.

In a surprise action, the 2004 Council did not address the Population Concerns Enactment. Instead by a 246-238 vote on a motion from the floor, it decided to refer the proposed Enactment to the Board for action. The proposed Enactment had been endorsed by 21 Rotary Districts to the Council, making it the most endorsed item among 427 pieces of legislation presented to the Council. The Enactment was not voted on.

It is a matter of record that the RI Board opposed the proposed Enactment, based on the thought that it did not want any more Standing (or permanent) Committees. There are currently seven Rotary Standing Committees. All other Rotary committees are appointed each year by the President. The Board felt that if Standing Committees were established for every topic of importance, Rotary would soon be covered up with Standing Committees. Proponents of the Standing Committee for Population Concerns had heard these arguments. They responded that if any Standing Committee was needed, it was a Population Concerns Standing Committee, since overpopulation is a root cause for almost all forms of human suffering presently endured by mankind. The Millennium Development Goals will never be achieved without tackling population issues.

The Council on Legislation of 1998 nearly unanimously passed the Population Resolution, saying to the Board that the Population issue is important, and recommending that Rotary take it up among its humanitarian programs. For a few years following the 1998 Council, the RI Presidents named committees to address the Population issue. For the past few years, however, the Presidents have not appointed Population committees. For one year, the President, for personal reasons, treated the topic as something immoral, which irritated many Rotarians. This is an unfortunate situation, since Rotary, maybe more than any other group in the world, has the organizational capacity to make a difference in global population growth trends. Today, the global population is 6 billion. Whether it grows to 9 billion or doubles to 12 billion by 2050, will be based on the choices we all make today. It relies on whether or not Rotary assumes a leadership role in working to help poor people utilize the basic human right of voluntary family planning. The question becomes: is the Population issue important and worth dealing with objectively today, or do we act indifferently about it, and accept whatever outcome happens?

Unfortunately, 98% of the three to six billion new people that will arrive in the world by 2050 will arrive in developing countries – those same countries that now suffer most from overpopulation and lack of resources. If they suffer today, their misery will increase many-fold by 2050. And those of us from the affluent countries can not regard this situation passively, since the competition for global resources will spill over in every direction. Asia's resource challenges will become North America's challenges, and Africa's resource challenges will become Europe's challenges, and so forth. The blind eye of indifference toward your neighbor littering the yard does not work in this case, since the litter will soon be piling into your yard.

So now having the Population Concerns issue again referred to, what will the RI President and Board do? The responsible action would be to appoint a series of Population Concerns committees, and to ensure that population issues are addressed by existing RI Task Forces and at RI Institutes. Our leaders should recognize the Population Resolution of the 1998 Council is still valid, that the strength of support for the Enactment at the 2004 Council was considerable, and that the Enactment probably would have passed had the motion to refer not been approved (*Writer's note: The motion to refer passed by a margin of just four voters. Many of the supporters of the Enactment were stranded at the floor microphones when the vote for the motion to refer was called, and many voters would have thought they were voting for the Enactment and not the motion to refer*). To ignore this call for action would be insensitive to the global importance of the Population issue and indifferent to the wishes of the organization. It will be most interesting to see how this issue unfolds in the near future.

by Buck Lindsay

KID'S CORNER: "LEND A HAND TO EARTH"

THE SILENT REVOLUTION OF HOPE

Objectives:

The student will be able to:

- Identify one positive action that he/she can take to protect the environment.
- Contemplate the cumulative affect of individual actions.

Materials:

- Construction paper, assorted colors, or finger-paints
- Markers in assorted colors
- Poster-size craft paper

Overview:

As the next generation of leaders, parents and voters, children should feel empowered to take positive action to protect the environment. In this activity, they will create a "handprint" that contains a description of one way they can help the Earth. The class's handprints will be displayed together, showing a collective commitment to protecting the environment and representing the cumulative affect of individual actions.

Procedure:

1. Ask the children to each think of one positive action they could make to protect the environment and why it is important. It may be helpful to brainstorm with the students and assist in generating a list of ideas from which each child can choose an action. Be sure to discuss why each action is important. An example of a positive action pledge is "I will write or draw on both sides of a piece of paper." This action is important because re-using paper means we need less new paper. New paper comes from trees that have been cut down and may be dyed or treated with chemicals that are harmful to humans and the environment. Trees produce oxygen and provide shade, so it is important to limit our paper consumption as much as possible.
2. Help each student trace his/her handprint on construction paper and cut it out. (If using finger-paints instead, help each child make a handprint on the outer edge of the large sheet of paper – forming a border.)
3. Help each child write his/her action on his/her handprint.
4. Arrange the handprints on the large paper and glue them down. Include a drawing of the Earth in the middle of the banner, with the phrase "We All Can Lend a Hand to the Earth."
5. Display the poster in your classroom or school.

Discussion Questions:

1. Ask the children to describe their action and its implementation. They might point to their handprint on the banner while doing so. Is their action something they can do every day or just once in a while? Will they need an adult's help to complete their action?
2. Discuss each action and its positive impact on the Earth.
3. What are some things the class can do together to protect the environment? (Possible answers: Be sure lights are turned off when no one is in the room, use recycled paper and re-use paper and other materials creatively, conserve water.)

- *Sharing a Small World*, Education Guide by the [Population Connection](#).

Grade Level: Pre-K-2

Duration: Preparation – minimal;
Activity – 30-60 minutes.

Skills:

- Problem-solving
- Creating
- Brainstorming
- Drawing
- Decision-making
- Defining problems

For many, our World Community Service is the most fascinating of the Rotary services. You get to know people in other countries, make friends, and learn about foreign cultures. Rotarians tend to focus on problems that transcend national frontiers. We not only assist developing countries financially, but also by drafting, planning, implementing and controlling local projects, thus fulfilling the expectations of Rotary International and The Rotary Foundation. After all, the Foundation's donations need to be invested in actual projects. Rotary is known for its commitment to projects, as opposed to merely handing out cheques. If Rotary concentrated more on its strengths (something that successful corporations, organizations and associations have always done), this would benefit Rotary and the global community. There are about 35,000 Rotary Clubs worldwide in towns of all sizes, whose membership is composed of executives from all walks of life. They are carrying out projects based on the same constitution and principles - "all united in the ideal of service." This is an asset hardly any other organization possesses and therefore it should be used more. World Community Service may serve to reduce emergency and military aid missions to distressed areas which is both more humane and more economical. World Community Service directly contributes to Rotary's ultimate goal: the advancement of international understanding, goodwill, and peace.

Since 1967, World Community Service has been considered the very heart of Rotary. It is sometimes referred to as the "silent revolution of hope".

RFPD Offers Good Contacts

It is of vital importance to create and promote good contacts in the project country. This can be done in many ways. For example, by actively making use of the Rotary Fellowships, like RFPD and others. Projects like "Responsible Parenthood" are an effective means of

(continued on next page)

NEW LIFETIME MEMBERS

(6/1/04 - 7/31/04)

RFPD OFFICERS

Africa

Fuheir Saeed

Australia

Graeme Thompson

Egypt

Michael Fritsch

Azza Kandil

Salwa Morcos

Moh. Salah Morragy

Iman Rahmou

Japan

Ziichiro Yameshita

Korea

Jae Kyoung An

Dae-Jae Cho

Korea (continued)

Young Kwan Jang

Chang-Won Kim

Hyun-Mo Kim

Jeong-Sam Kim

Byung-Doo Lee

Do Hae Lee

Won-Taek Lee

Young-Ho Lee

Se Wong Lim

Dong Namgung

In Chul Park

Kwang-Doo Roh

Bum-Hyong Ryu

Dong-Hyuck Won

Hyung Ryul Yang

Philippines

Dr. Bernardino Perez

USA

Betsy Bechtel

Ken Boyd

Linda Ellsworth, M.D.

Walter J. Gordon, Sr.

Thomas Setter, M.D.

Mike Spanier

J. Keith George

Matthew Jeffs

Jerry Worthy

Gale Wayman

Robert Zinser, *Chairman*

Salem Mashhour, *Vice-Chairman*

Buck Lindsay, *Secretary*

Hari Reddy, *Treasurer*

Rekha Shetty, *Communications*

Adedolapo Lufadeju, *Past Chairman*

Charles Bull, *Webmaster*

Jennifer Hendrickson, *Executive Director & Editor of **Fragile Earth***

For questions or comments regarding
Fragile Earth email Jennifer at
rifpd@aol.com.

fighting poverty and famine. There are countless ideas for World Community Service projects. The Rotarian Fellowship for Population and Development publishes its Project Data Sheet listing projects, from various countries in this newsletter and on its website www.rifpd.org offering the help of its country chairs.

Mobilization of Funds from Other Sources

Rotary International is increasingly supporting World Community Service through The Rotary Foundation. In the past, the Foundation focused mainly on grants which hardly ever reached the developing countries. Today, the majority of Foundation funds are channeled into the World Community Service, via Matching Grants and 3-H Grants. Clubs are advised to use Designated District Funds (DDF), which are available for World Community Service projects. Some clubs have quadrupled their own funds, or even multiplied them by eight, after receiving a Matching Grant from the Foundation. In several cases, donations for Rotary projects have also been made available by private and corporate foundations. Few, if any, of the innumerable national and international foundations are aware of Rotary's unique global network which could channel their funds into aiding projects. Most NGO's first need to seek out and establish local partners which can prove difficult. Our clubs and districts in the developing countries can be trusted with the implementation of projects. For these reasons, our procedural handbook encourages us to tap alternative financial resources.

The RI "Menu of Service Opportunities"

All Rotarians know about PolioPlus which is the World Community Service program financed by Rotarians themselves and co-funded worldwide by governments, foundations, and private donations. A major 3-H Project of Districts 1840 and 9120 "Child Spacing, Family Health and Aids Education" in six Nigerian states brought much needed aid to millions of people. In order to avoid magnify the energies of our World Community Service work, the RI board created the "Menu of Service Opportunities" in 1999, recommending the following nine services (apart from PolioPlus):

- Children at Risk
- Disabled Persons
- Population Issues
- Poverty & Hunger
- Preserve Planet Earth
- Urban Concerns
- Health Care, Literacy and Numeracy

Challenge: Sustainable Development

World Community Service should be given a prominent role in Club matters. It helps people help themselves. "One central source of conflict is hopelessness ... these fears, these desperate outlooks lead to desolation and anarchy. Those who have nothing to lose become unpredictable - and capable of any deed. We have to counteract these trends by giving people hope - and a way out of their situation. And not only for a brief moment, but on a sustainable basis. Development aid and programs have to do - and can do - much more than fight poverty. They must also focus on solutions for ensuring long-term benefits and stability (Heinrich von Pierer, President and CEO of Siemens at the Security Council of the United Nations, News York, April 15, 2004).

by Dr. Robert Zinser

JOIN RFPD!

To join RFPD, send US \$10 for Annual Membership or US \$100 for Lifetime Membership along with name, address, phone, fax, Rotary Club and District to address below if in North America. For other regions, please contact:

Africa:

Adedolapo Lufadeju

email: dolaluf@skannet.com

Asia (except India):

Rekha Shetty

email: rekhasmindpower@eth.net

Europe: Robert Zinser

email: robert.zinser@t-online.de

India: Hari Reddy

email: pdgharireddy@yahoo.com

North Africa

(includes Middle East):

Salem Mashhour

email: info@ectra.com.eg

North America:

Buck Lindsay

email: lpbatlanta@aol.com

Website: www.rifpd.org

www.rfpd.de

Tel: 770-963-3252, ext. 200

Fax: 770-822-9492

RFPD COUNTRY CHAIRS

American Samoa, *Michael Dworsky*

Australia, *Glenda Hedley*

Austria, *Peter Neuner*

Bangladesh, *Emdad Ul Haq*

Belgium, *Hessel Danser*

Belize, *Marcelo Coyi*

Bermuda, *Augustine Hardart*

Brazil, *Adelia Villas*

Canada, *Laetitia De Witt & Rob McLeod*

Congo, *Victor Kanyinda*

Cook Islands, *John Fallon*

Cote D'Ivoire, *Paulin Claude Danho*

Denmark, *Torben Folmer Bech*

Ecuador, *Hector Plaza*

Egypt, *Salem Mashhour*

Ethiopia, *Yemane Bisrat*

Eritrea, *Girmay Haile*

Finland, *Jouko Hulkko*

France, *Pierre Badere*

Gabon, *Josepj Owondault-Berre*

The Gambia, *Oumou Seydou Tall*

Germany, *Robert Zinser*

Ghana, *Mike Asafo-Boakye*

Guinea, *Amadou Diarra*

Great Britain, *Peter H. Swift*

Guam, *Abi Adigun*

Guatemala, *Steve Dudenhoefter*

India, *Hari Reddy*

Indonesia, *Natalia Soebagjo*

Israel, *David Neumann*

Italy, *Piero Marcenaro*

Japan, *Yoshi Sekiba*

Kenya, *Eric Krystall*

Malaysia, *Rajindar Sing*

Mali, *Amategue Dolo*

Mexico, *Andres Robles*

Nepal, *Hartmut Bauder*

Netherlands, *Cees v. d. Berg*

New Guinea, *Richard Knox*

Nigeria, *Adedolapo Lufadeju*

Norway, *Bernt Gulla*

Pakistan, *Zaeema Alvi Ahmed*

Peru, *Martin Singer*

Philippines, *Jun Nolasco, Jr.*

Russia, *Alexandre Makatsaria*

Samoa, *Marco Kappenberger*

Senegal, *Alassane Mar*

Singapore, *Rosy Nakhooda*

Solomon Islands, *David Quan*

South Korea, *D. H. Won*

Spain, *Andres Gomez Nunez*

Sri Lanka, *Janaka Edirisinghe*

Sweden, *Bernard Svanberg*

Switzerland, *(no country chair, seeking leadership)*

Tanzania, *Faye Cran*

Togo, *Dianne Warner*

Turkey, *Turgut Gokyigit*

Uganda, *Robert Ssebunnya*

Ukraine, *Anatolyy Shyrovkov*

USA, *Buck Lindsay*

Venezuela, *(no country chair, seeking leadership)*

West Indies, *Dave Maharaj*

Zambia, *Patrick Chisanga*

Zimbabwe, *Peter Naude*

FRAGILE EARTH

The Rotarian Fellowship for Population & Development

270 Langley Drive

Lawrenceville, Georgia 30045 USA

The Rotarian Fellowship for Population & Development is not an agency of, or controlled by, Rotary International.

NON-PROFIT
U.S. POSTAGE
PAID
PERMIT NO. 7926
ATLANTA, GA

PRINTED MATERIAL